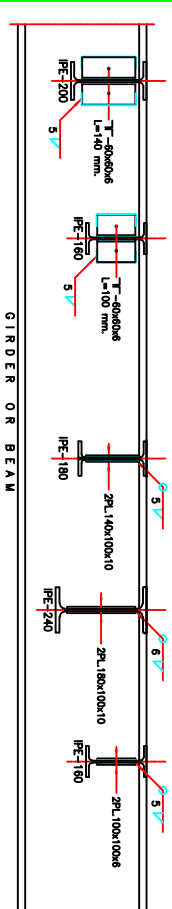
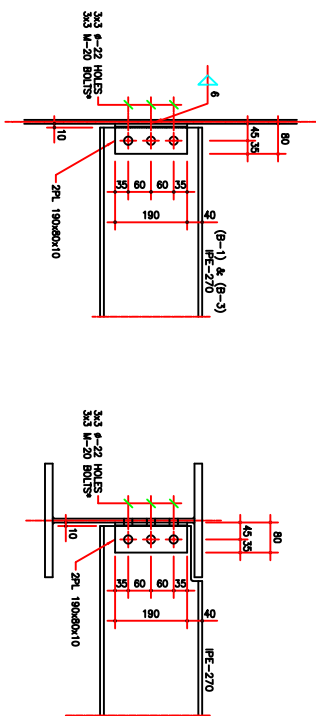


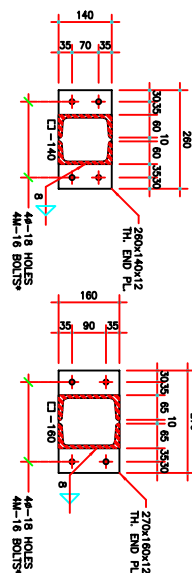
GIRDER G-3, G-4, G-6 & CONNECTION DETAILS



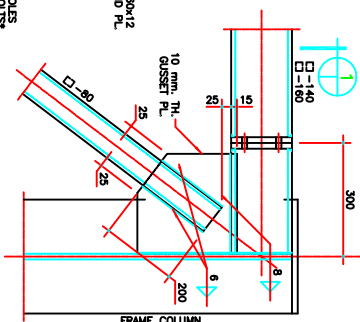
TYPICAL JOIST CONNECTION DETAILS



BEAM B-1 & B-3 CONNECTION DETAILS



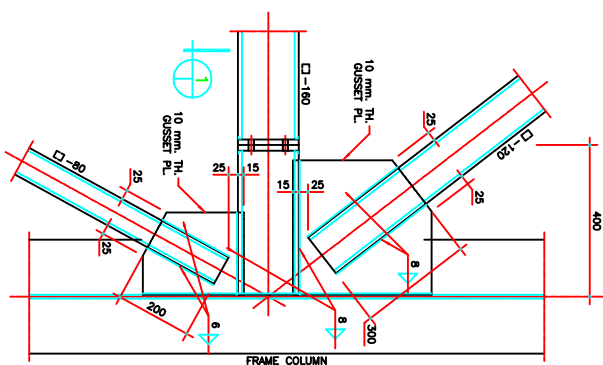
SECTION 1



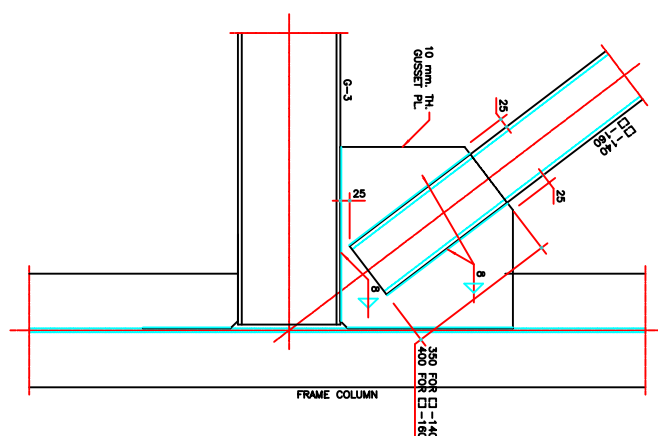
DETAIL

1:10

⊕



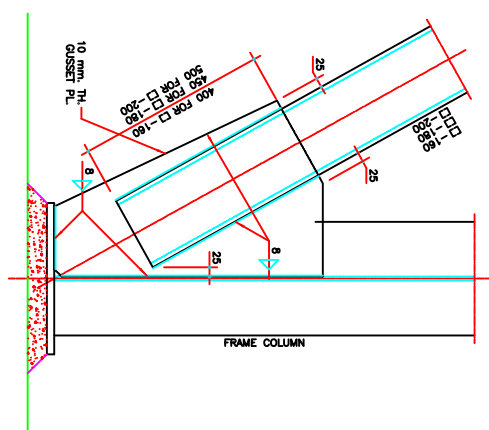
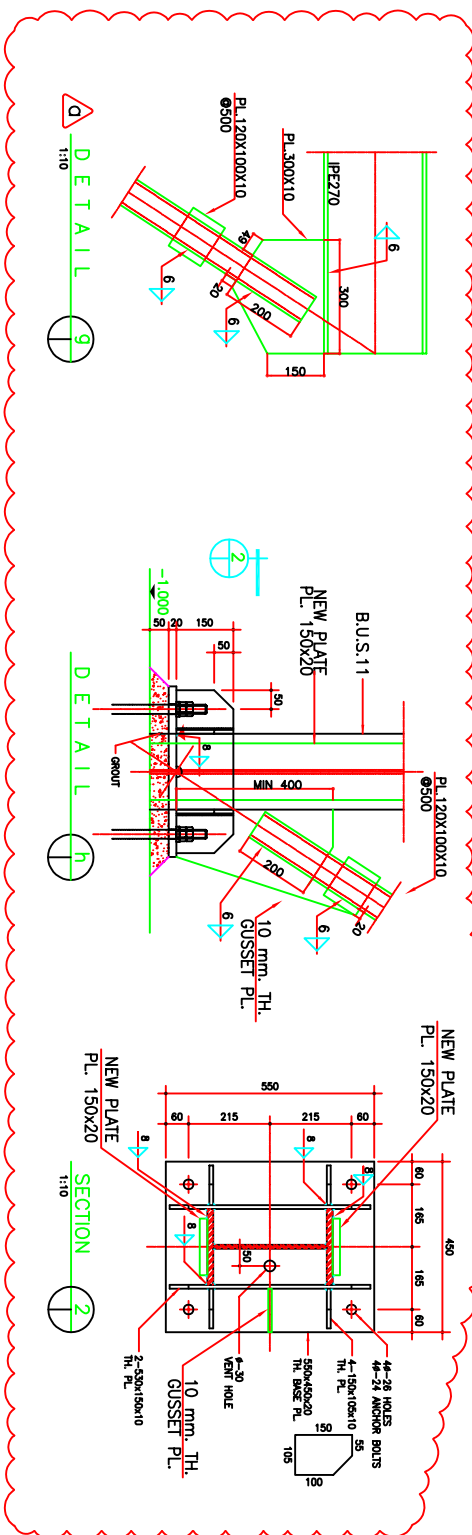
DETAIL
1:10



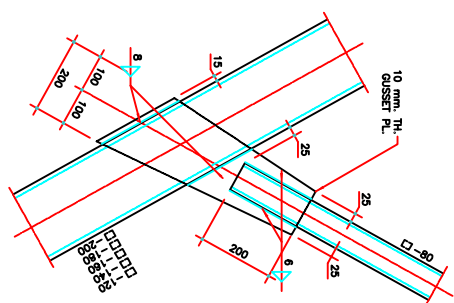
DETAIL

1:10

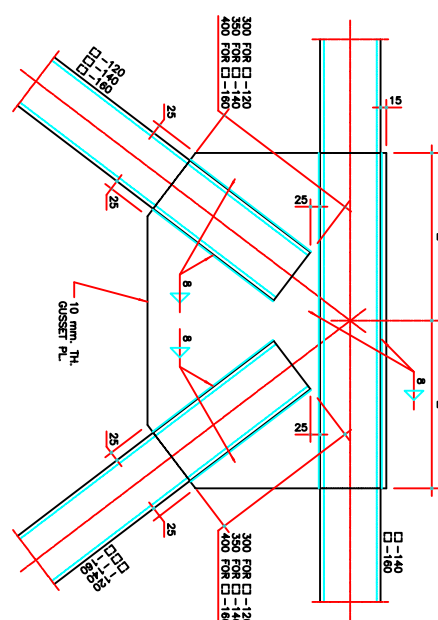
f



DETAIL
1:10



DETAIL b
1:10



DETAIL C
1:10

I S S U E S			
REV	DATE	COPY	ISSUED TO
	99.12.13	S.C	KEMAN BAREZ TIRE CO.
0	99.12.25	S.C	KEMAN BAREZ TIRE CO.

A							
A							
A							
A							
A							
A							
REF: NO OF Δ	98.12.25	PLATFORM DETAILS ARE ADDED					
DATE		R	E	V	I	S	I
		O	N				
		P.A.		P.A.		S.I.	
		DRAWN		CHECKD		APP'D	

Kerman Barez Tire Co. Radial Tire Manufacturing Plant-Kerman	
ArashBehzadizaman Samati CONSULTING ENGINEERS	
SCALE AS SHOWN	TIRE PRE-BUILDING(SUBSTANTION)
DRAWN P.A.	PROJECT NUMBER 9862
CHECKED P.A.	DRAWING NUMBER REV.
APPROVED S.A.	1,622313 0
DATE 09/12/13	
CAD FILE 02822313	
STEEL STRUCTURE	
CLIENT'S DRAWING NUMBER	